

鶴ヶ島プロジェクト 2012 鶴ヶ島市に現存する鶴ヶ島第二小学校 (約 6,400 m²) と

Tsurugashima Project

2012

それに隣接する南公民館 (約 2,000 m²) を複合化し、
管理部門の共有や多目的化によって
面積を 75% 程度に圧縮し、
同時に新しい教育の実践や多様な市民活動、
およびそれらの交流など今日的な課題にも応える
「郊外都市のコミュニティコア」を
提示するというものである。

ワークショップ企画 (設計課題)

2012.4.11-12.8

Workshop Organizing (Studio)

April-December, 2012

Not only were Tsurugashima city DAINI elementary school
(about 6,400 m²) and Tsurugashima city south community center
(about 2,000 m²) next to it conjugated, they were also compressed to
about 75% of the area by sharing multi-purposed administrative divisions,
and meeting challenges such as new educational practices
and various civic activities, presenting the "community core of suburban cities."

1st public meeting: May 23, 2012

2nd public meeting: June 6, 2012

3rd public meeting: June 20, 2012

4th public meeting: July 4, 2012

5th public meeting/Final review: July 18, 2012

Exhibition: September 3-14, 2012 at Tsurugashima, Saitama

Exhibition: December 3-8 at Shibuya, Tokyo

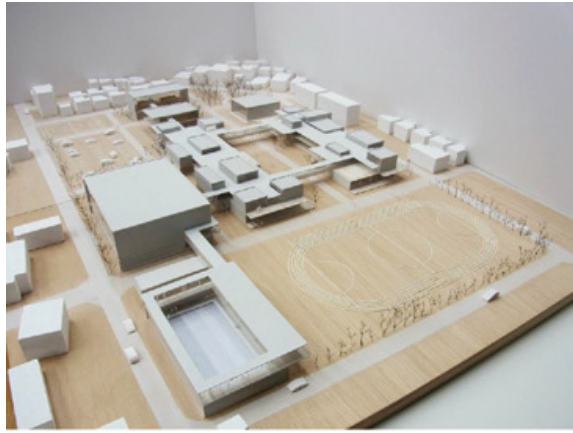
Photo: Dep. of Architecture, Toyo Univ. [002-008]



2nd public meeting: June 6, 2012 at Tsurugashima city DAINI elementary school



5th public meeting/Final review: July 18, 2012 at Tsurugashima city south community center



9 models selected for 5th public meeting/Final review



5th public meeting/Final review: July 18, 2012 at Tsurugashima city south community center



5th public meeting/Final review: July 18, 2012 at Tsurugashima city south community center



Exhibition : September 3-14, 2012 at Tsurugashima city office



Symposium: September 14, 2012 at Tsurugashima city office



Gallery talk : December 3, 2012 at Shibuya Hikarie



Exhibition : December 3-8, 2012 at Shibuya Hikarie



Exhibition : December 3-8, 2012 at Shibuya Hikarie



Symposium : December 7, 2012 at Shibuya Hikarie