

鶴ヶ島太陽光発電所 環境教育施設

Facility for Ecology Education

2014

所在地: 埼玉県鶴ヶ島市

竣工: 2014 年 3 月

用途: 環境教育施設

構造: 木造

規模: 地上 1 階

最高の高さ: 6,560 mm

敷地面積: 499.00 m²

建築面積: 127.82 m²

延床面積: 127.82 m²

—

Saitama, Japan

March, 2014

Environmental
Education Facility

127.82 m²

東京郊外の住宅地の一角にある工場跡地に建設された
大規模太陽光発電施設のなかの環境教育施設である。

デザインプロセスでは、

「駅」「教会」「路地」などのモチーフが

パブリックミーティングで生成され、

最後に統合された。

This is a facility for ecology education built within
a mega-solar power plant

located at an old factory site on the corner of
a residential neighborhood of suburban Tokyo.

During the design process, motifs such as
"Station", "Church" and "Alley" were generated at
public meetings, and were integrated at the end.

Photo: Takumi Ota [002, 007-010, 012, 014, 016-018, 020-024]

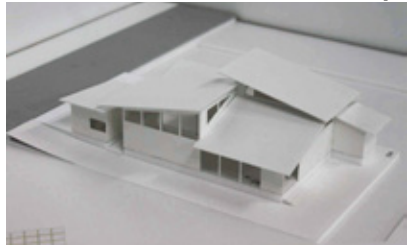
Photo: Dep. of Architecture, Toyo Univ. [003-006]



10 proposals for 1st Public Meeting / May-11 2013



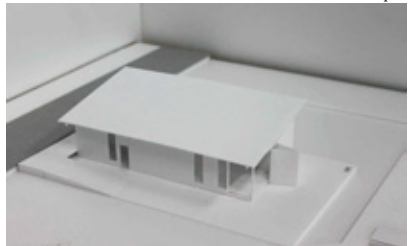
9pts



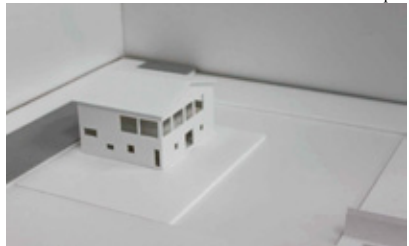
6pts



6pts



3pts



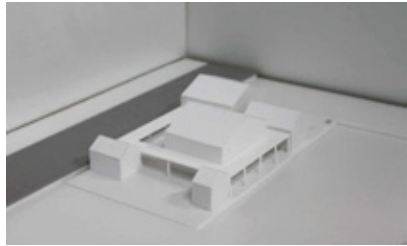
0pts



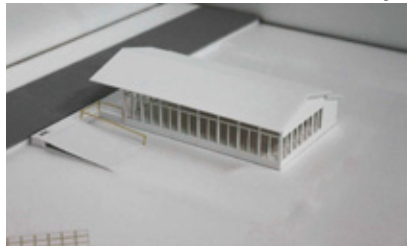
6pts



4pts



0pts

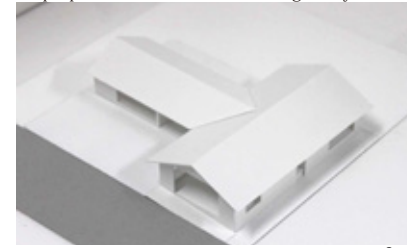


9pts



12pts

10 proposals for 2nd Public Meeting / May-25 2013



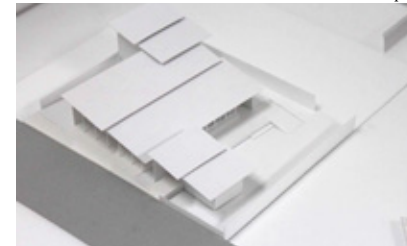
6pts



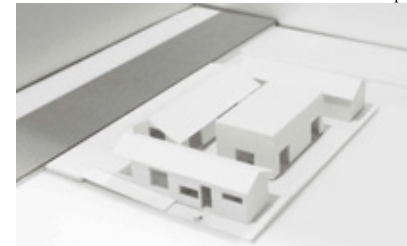
4pts



11pts



4pts



4pts



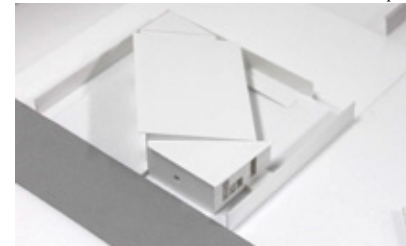
1pts



3pts



0pts



13pts



3pts

3 proposals for 3rd Public Meeting / June-22 2013



Station hut type
43pts



Church type
19pts



Alley type
17pts

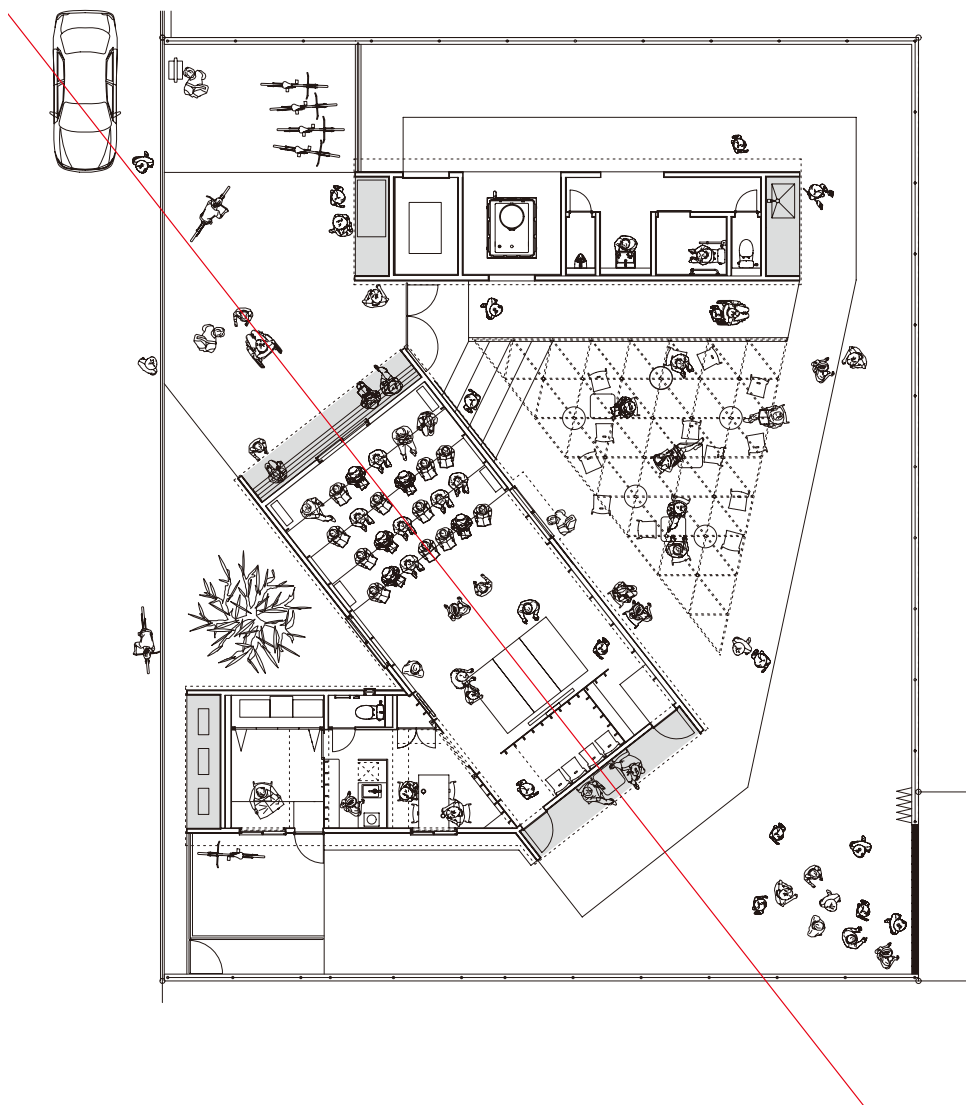
1 proposals for 4rd Public Meeting / July-13 2013



Final type

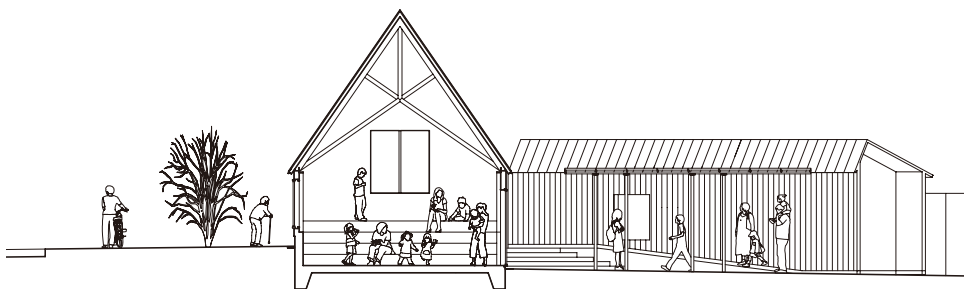






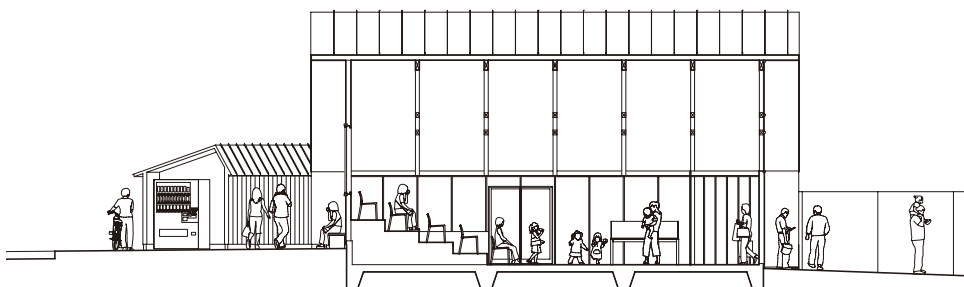
Site Plan S=1/200





Short Section S=1/200

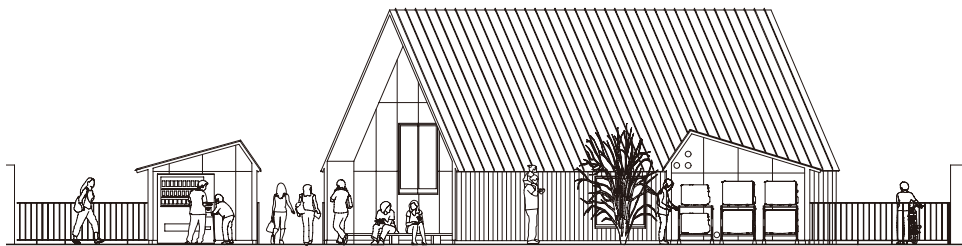




Long Section S=1/200







Elevation S=1/200





